

# State of Wyoming Corner Record

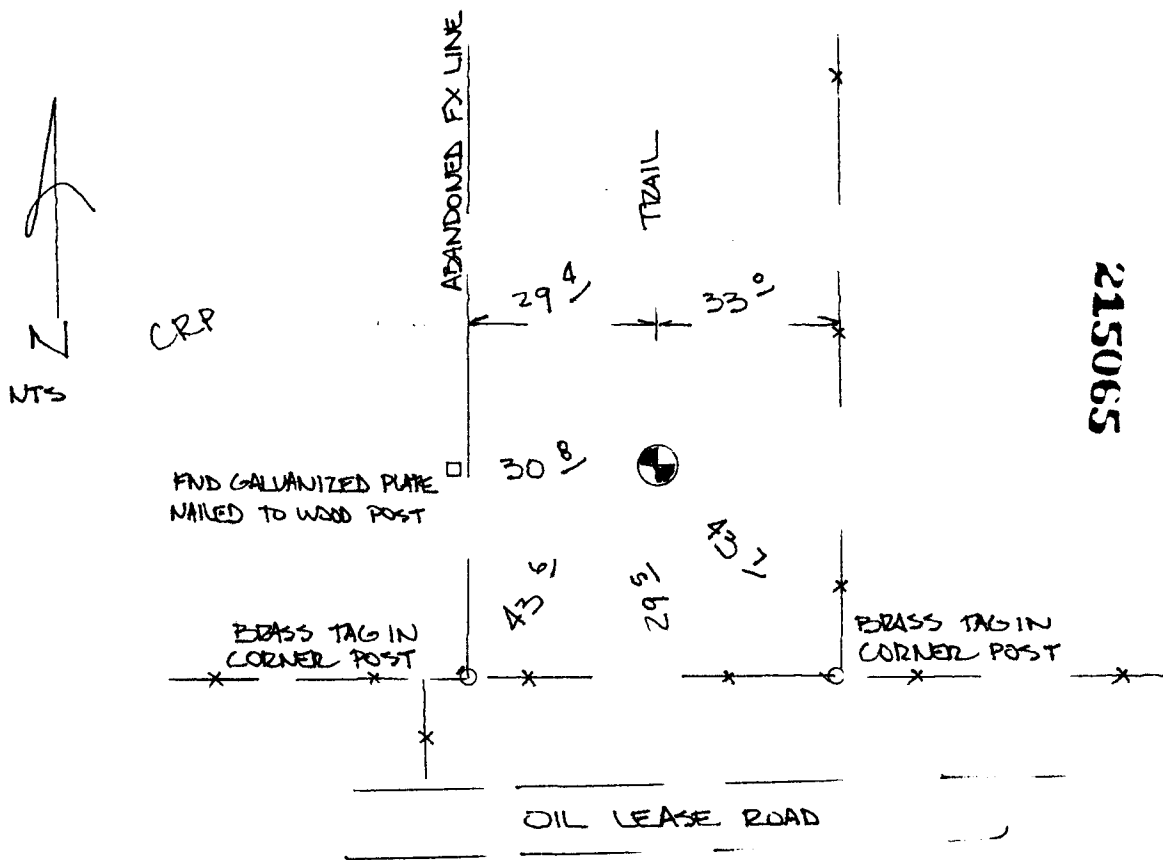
(In compliance with the *CORNER PERPETUATION AND FILING ACT*, Wyoming Statutes, 1977, Section 36-11-101, et. seq., and the Rules and Regulations of the Board of Registration for Professional Engineers and Professional Land Surveyors)

Reverse side of this form may be used if more space is needed.

Record of original survey and citation of source of historical information (if corner is lost or obliterated). Description of corner monumentation evidence found and/or monument and accessories established to perpetuate the location of this corner. Sketch of relative location of monument, accessories, and reference points with course and distance to adjacent corner(s) (if determined in this survey). Method and rationale for reestablishment of lost or obliterated corner.

ORIGINAL CALL:  
SANDSTONE 20" x 10" x 4"

FOUND 1 1/2" GALVANIZED PIPE AT GROUND LEVEL. CORNER FALLS WITHIN FENCED AND APPARENT GRADED RIGHT OF WAY. FOUND NO OTHER EVIDENCE OR INDICATION OF ORIGINAL CORNER. ACCEPTED FOUND PIPE AS BEST EVIDENCE OF CORNER POSITION.



LARAMIE COUNTY CLERK  
CHEYENNE, WY.  
97 DEC 10 PM 12 06

Date of Field Work: 11.04.97

Office Reference: S10

**CROSS INDEX DIAGRAM**

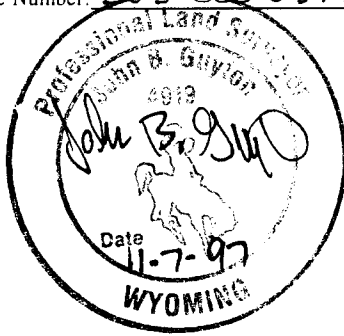
1	2	3	4	5	6	7	8	9	10	11	12	13	14	15	16	17	18	19	20	21	22	23	24	25	
A																									A
B																									B
C	6		5		4		3		2		1														C
D																									D
E																									E
F																									F
G	7		8		9		10		11		12														G
H																									H
J																									J
K																									K
L	18		17		16		15		14		13														L
M																									M
N																									N
O																									O
P	19		20		21		22		23		24														P
Q																									Q
R																									R
S																									S
T	30		29		28		27		26		25														T
U																									U
V																									V
W																									W
X	31		32		33		34		35		36														X
Y																									Y
Z																									Z

Firm/Agency, Address

JOHN B GUYTON  
LEDSURV INC  
520 STACY COURT STE B  
LAFAYETTE CO 80026

Telephone Number: 303-666-0379

This corner record was prepared by me or under my direction and supervision.  
*SEAL & SIGNATURE*



Corner Name: NE SECTION COR Section: 16 T 15N R 63W, 6 P.M. Cross-Index No.: J-13  
SBRPEPLS/PLSW: March 1994

BOOK 1467

0753